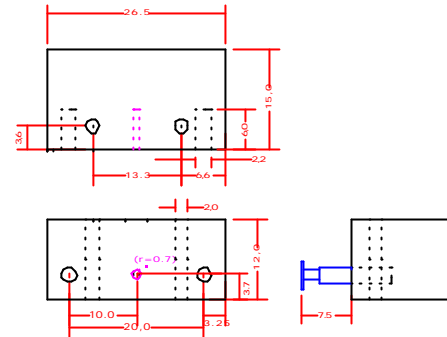
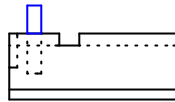


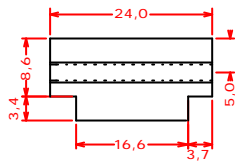
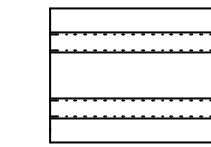
Kupplungslehre

Kupplung nach NEM 362
Gleis nach NEM 340

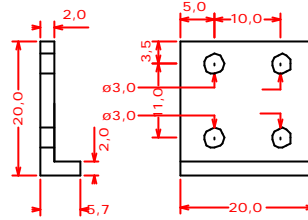
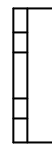
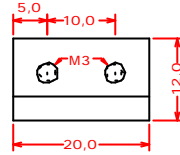


Pufferbohlenaufsatz für Kupplungslehre

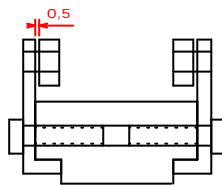
Puffer nach NEM 303



Kunststoffblock



Metallwinkel

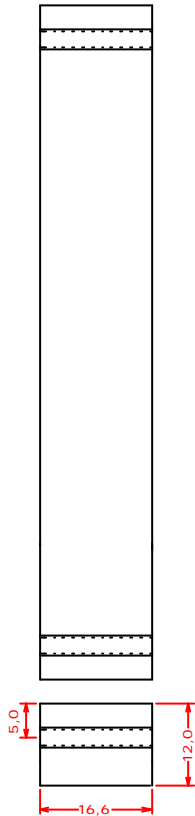


4 Kugellager : $d_a = 7\text{mm}$
 $d_i = 3\text{mm}$
 $b = 3\text{mm}$

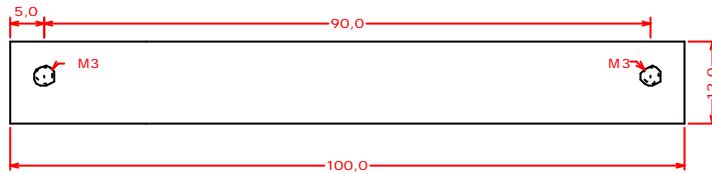
4 Spannhülsen 3*10mm

4 Schrauben M3*10mm

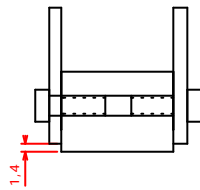
1 Kunststoffblock
 2 Metallwinkel



Kunststoffblock

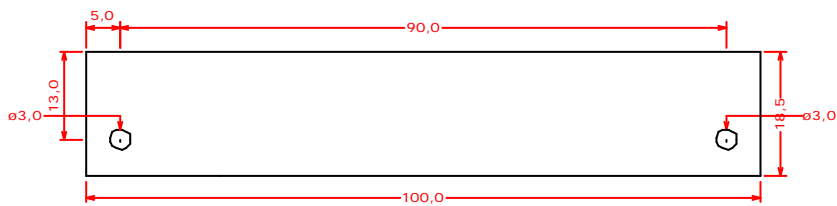


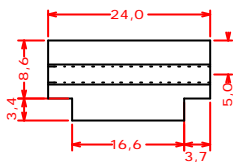
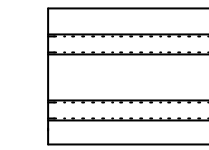
Metallstreifen



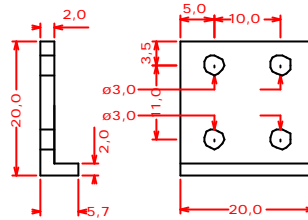
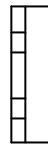
4 Schrauben M3*5mm

1 Kunststoffblock
2 Metallstreifen

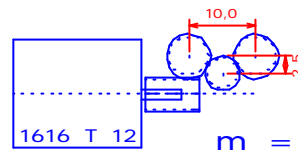
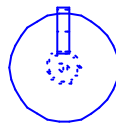




Kunststoffblock



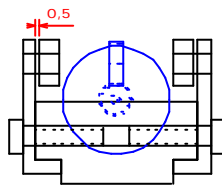
Metallwinkel



$$m = 0.3$$

$$Z = 20/15$$

Motor	1616 T 012 S	38.50
Schnecke	MS 0305	3.20
Ritzel	ZR 0320	3.95
Ritzel	ZR 0315	3.40
Lager	KL 373	3.95

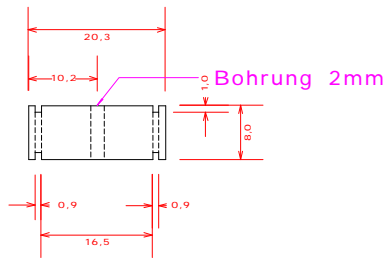


4 Kugellager : $d_a = 7\text{mm}$
 $d_i = 3\text{mm}$
 $b = 3\text{mm}$

4 Spannhülsen 3*10mm

4 Schrauben M3*10mm

1 Kunststoffblock
 2 Metallwinkel



Spurlehre

Datum:
08.09.2002

Zeichnungsnummer:
SPURLEHRE

Blatt
1
von
1